
Our Present

The Lincoln County Museum of History (LCHM) has many excellent pieces of Catawba Valley pottery in its collection as well as pieces on loan to the museum. But due to limited display space, it is unable to permanently display these pieces.

To remedy this dilemma, the Historical Association has formed a collaborative partnership with the Downtown Development Association, Rising Sun Pottery and area potters to incorporate the Catawba Valley Pottery Center.

Located in historic downtown Lincolnton, the Pottery Center will display the museum's collection and interpret the heritage and development of the Catawba Valley pottery tradition.

To complement the museum's display of traditional pottery, contemporary Catawba Valley potters will have retail space to sell their own pottery.

The Pottery Center will promote participating potters' individual studios and kiln openings and occasionally host potters for demonstrations and/or technique classes.

The Catawba Valley is poised for a renaissance in pottery, and Downtown Lincolnton's central location in the six county area of Cleveland, Gaston, Lincoln, Catawba, Mecklenburg and Iredell makes it an ideal location to develop as a destination for Catawba Valley pottery collectors and shoppers.



Located on the quiet side of Charlotte, Lincolnton is a delightful surprise to visitors. Our distinguished downtown, engaging history, and quality accommodations leave you wondering why it took so long to find us.

Love you soon!



City of Lincolnton
114 East Main Street
Lincolnton, NC 28092
704.736.8915
www.lovablelincolnton.org

The
Catawba Valley
Pottery Center

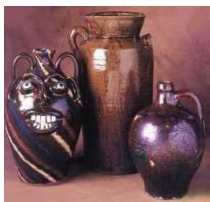
Celebrating the Catawba Valley Pottery Tradition



Tel: 704-736-8915
www.catawbavalleypotterycenter.org

Our Past

The Catawba Valley pottery tradition spans two centuries of potters reaching back to the late 18th century. The first potters settled in the Vale region of Lincoln County. Recognizable family names make up the tradition: Seagle, Hartzog, Ritchie, Hilton, Reinhardt and Propst. As well as less familiar names such as Haynes, Rudisil, Bass and many others.



Traditional Catawba Valley Pottery

The Catawba Valley was once dotted with potting sheds and kilns as craftsman turned out vast quantities of wares needed by the burgeoning population in the region. From jugs to jars and milk crocks to pitchers everything was produced in quantity and amazing quality.

The utilitarian tradition began to falter in the middle part of the 20th century as other materials and factory made goods began to replace handmade pottery.

Fortunately there is a renaissance occurring in pottery, and the ancient art born out of necessity has been revived with the emphasis on aesthetics as much as function. New family names mark this new tradition: Craig, Lisk, Ellington, Abee, Mitchell, Reinhardt, Hodge, Kale and many others.

Our Future

Lincolnton and the Catawba Valley Pottery Center will become synonymous with the new Catawba Valley Tradition. Potters will travel from across the southeast and United States to participate in fellowship opportunities and educational sessions surrounding the traditional methods used to turn and fire Catawba Valley Pottery. Classroom and studio space will be available at the CVPC for apprentice potters and technique classes with instructors steeped in the Catawba Valley Tradition.

New potters will settle in the Catawba Valley and set up new shops and kilns in an environment of collaboration and cooperation with other potters. The tradition will not only be celebrated as history but also as a continuing influence on the culture and economy of the region.

A heritage trail will be developed with various interpretive stations depicting the historic context of the Catawba Valley Tradition. Potential sites include: Seagle Kiln archeological site, Reinhardt-Craig House, Kiln and Pottery Shop and others. Most of these will remain in operation and in private hands with no harm to the sites.

The CVPC's collection of pottery will grow to be the best in the southeast and the nation. Regular exhibitions will highlight differing aspects of the tradition as well as compare and contrast the similarities and differences with other pottery traditions. The retail area of the Center will spawn new retail galleries and other artist studios in downtown Lincolnton energizing the local economy and establishing downtown Lincolnton as a destination for pottery collectors and shoppers alike.

Complementary Pottery Events

Catawba Valley Pottery Festival
Hickory, NC

Burlon Craig Pottery Festival
Vale, NC

Carolina Pottery Festival
Shelby, NC

Please Contact Me

- I'm willing to make a monetary donation
- I'm willing to make a pottery donation
- I'm willing to volunteer at the CVPC
- I'm willing to donate _____ services
- I'm willing to have pieces of my personal collection of pottery on display during an exhibition
- Include me on the CVPC Mailing list

Name

Address

Phone

Email
